

TABLE OF CONTENTS		
PLATE	PLATE NAME	DATE
1	COVER PAGE	1/9/22
2	BASE SIDES	1/9/22
3	BASE ASSEMBLY	1/9/22
4	TOP	1/9/22

STORAGE BENCHES

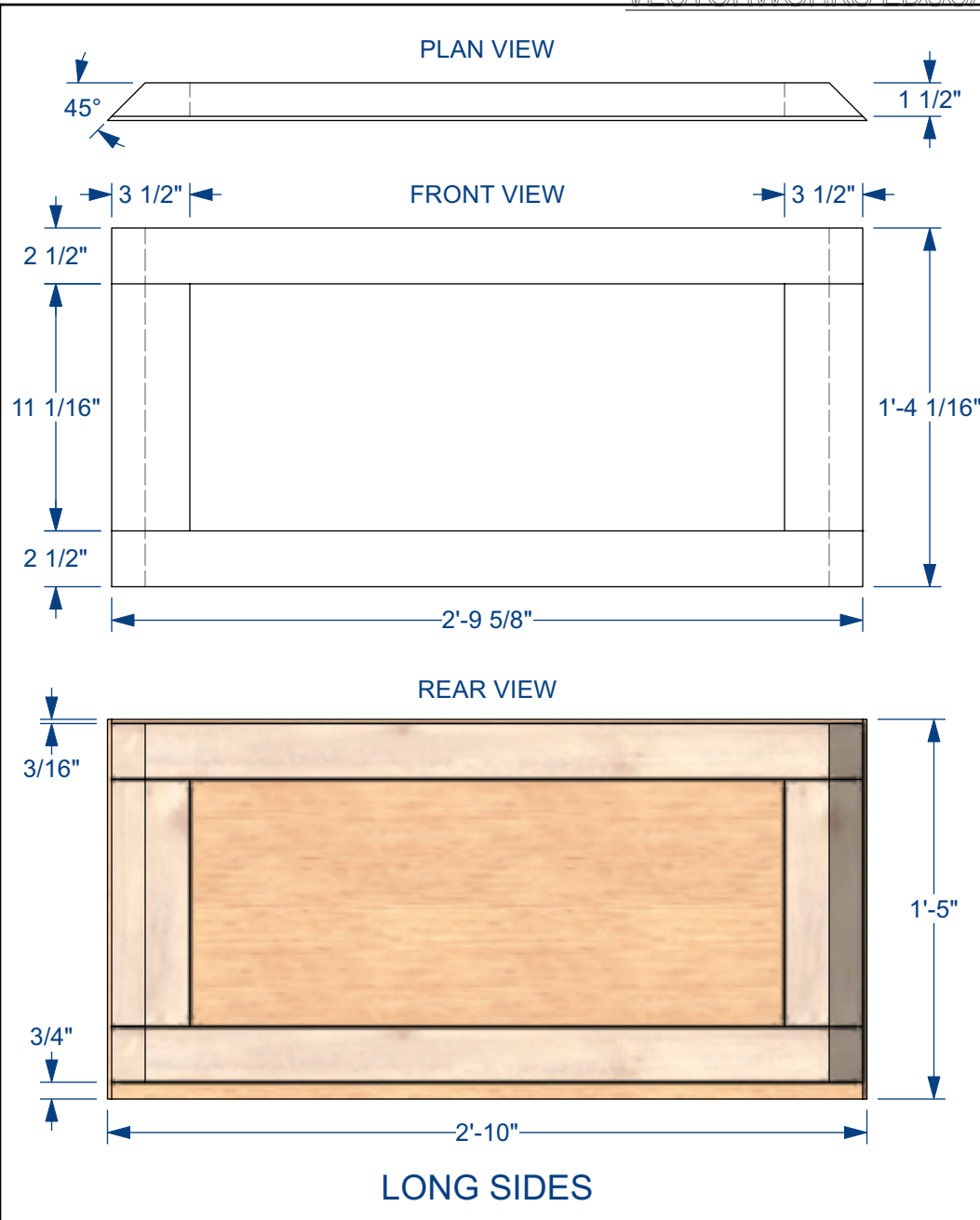
ORDER OF OPERATIONS	
1	CUT & ASSEMBLE SIDE FRAMES
2	CUT & ATTACH BASE PLY
3	CUT & ATTACH BASE LAUAN
4	CUT & DRILL TOP PLY & FOAM
5	INSERT T-NUTS INTO TOP PLY
6	CUT, DRYFIT, & PAINT TOP LAUAN
7	UPHOLSTER & TUFT TOP
8	ATTACH TOP LAUAN
9	ROUTE HINGE INSETS INTO BASE
10	BOLT HINGES TO TOP & DRYFIT WITH BASE
11	PAINT TREATMENT ON BASE
12	NAIL FURNITURE GLIDES TO BASE
13	DRYWALL SCREW HINGES TO BASE

BUILD 4 BENCHES

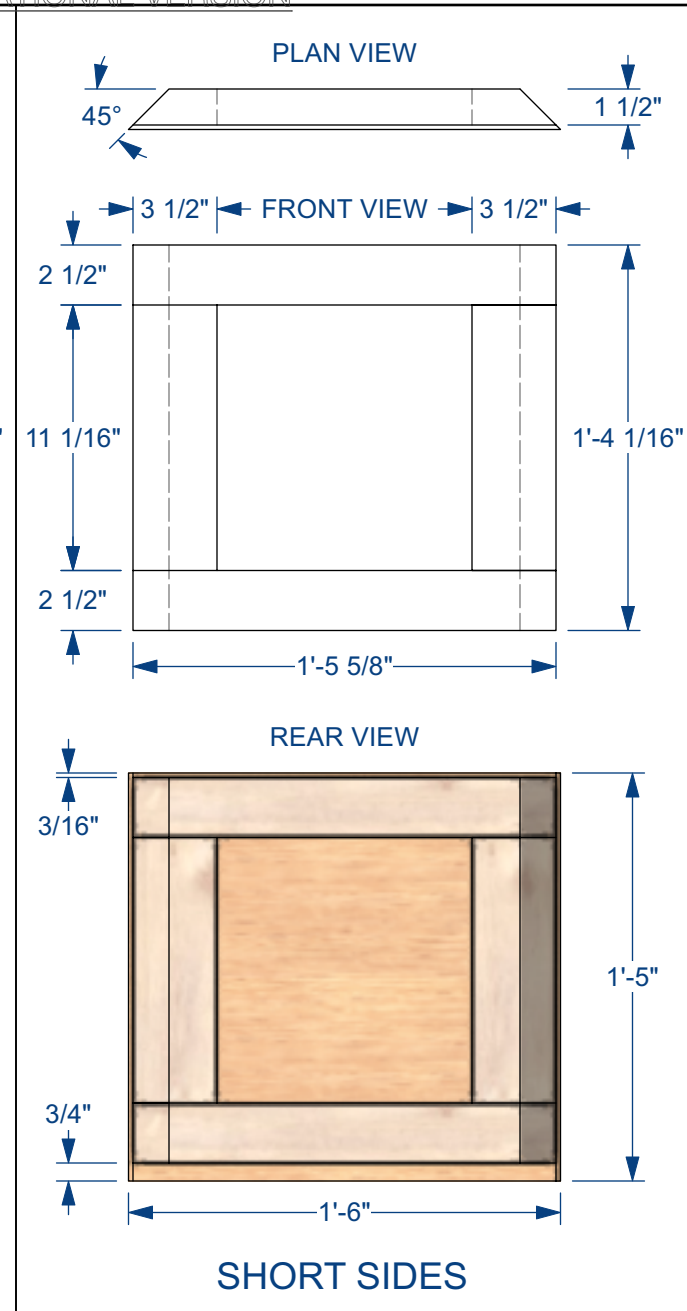
COVER PAGE

EVERYBODY

PLAYWRIGHT:	BRANDEN JACOBS-JENKINS
DIRECTOR:	KRISTIN NESHATI-JOHNSON
SCENIC DESIGNER:	JONATHAN DAHM ROBERTSON
PROPS DESIGNER:	STEPHAN STARLING
	GMU SCHOOL OF THEATER
	DATE: 1/8/22
	REVISED: 1/9/22
	SCALE: 1" = 1'-0"



LONG SIDES



SHORT SIDES

BUILD 8 OF BOTH
 RIP 2x4 WHITE WOOD TO SIZE
 ASSEMBLE FRAME WITH
 WOOD GLUE & DRYWALL SCREWS
 ATTACH LAUAN FACING WITH
 WOOD GLUE & NARROW CROWN STAPLES

CUT LIST

- 2x4**
- 3 1/2" RIP
 $\begin{matrix} \perp \\ \rightarrow \end{matrix} \perp_{45^\circ}$
- 32 @ 0'-11 1/16"
- 2 1/2" RIP
 $\begin{matrix} \perp \\ \rightarrow \end{matrix} \perp_{45^\circ}$
- 16 @ 2'-9 5/8"
- 16 @ 1'-5 5/8"
 $\begin{matrix} \perp \\ \rightarrow \end{matrix} \perp_{45^\circ}$
- 3/4" PLYWOOD**
- 4 @ 1'-5 5/8"
 x 2'-9 5/8"
- LAUAN**
- 8 @ 2'-10"x1'-5"
 $\begin{matrix} \perp \\ \rightarrow \end{matrix} \perp_{45^\circ}$
- 8 @ 1'-6"x1'-5"
 $\begin{matrix} \perp \\ \rightarrow \end{matrix} \perp_{45^\circ}$

BASE SIDES

PLAYWRIGHT:	BRANDEN JACOBS-JENKINS
DIRECTOR:	KRISTIN NESHATI-JOHSEN
SCENIC DESIGNER:	JONATHAN DAHM ROBERTSON
PROPS DESIGNER:	STEPHAN STARLING

PLATE

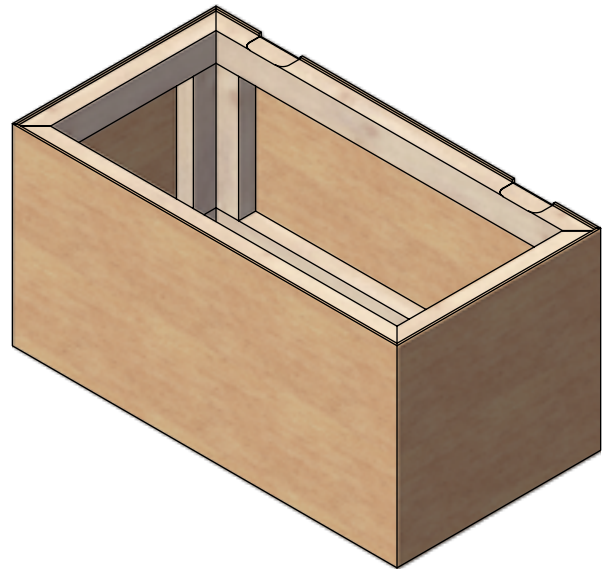
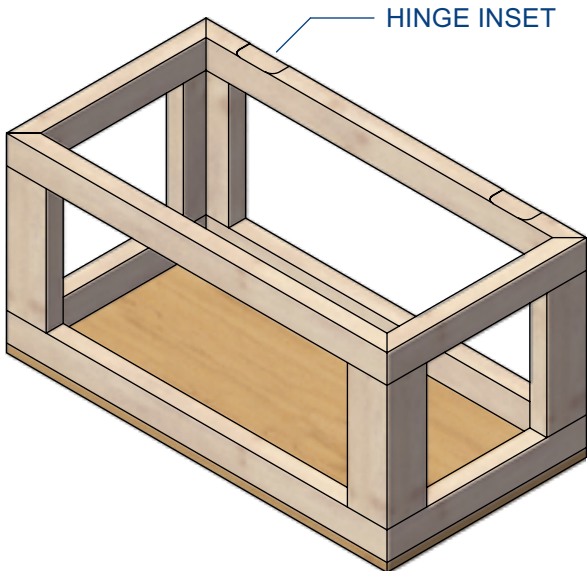
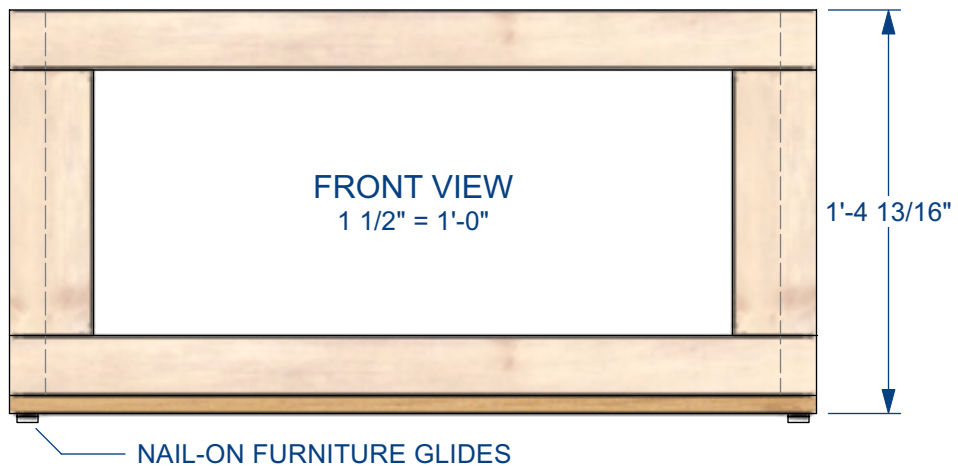
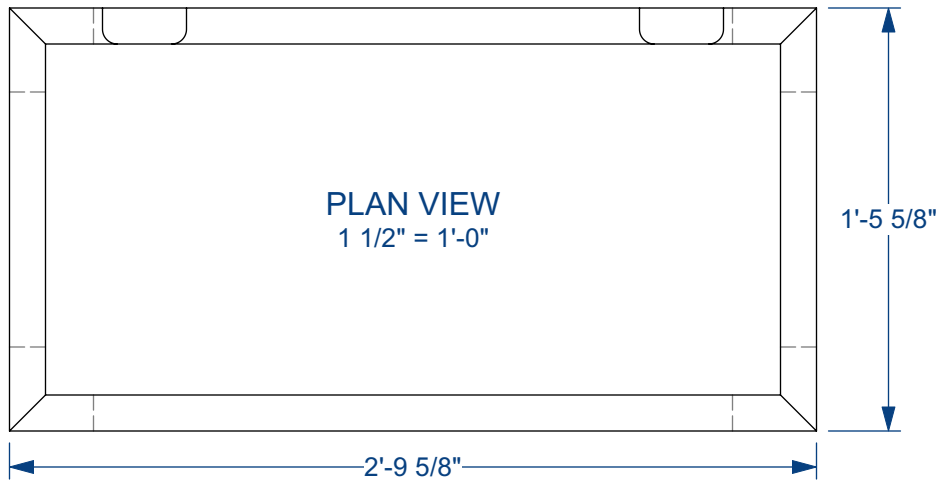
2

OF 4

EVERYBODY

GMU SCHOOL OF THEATER
DATE: 1/9/22
REVISED: 1/9/22
SCALE: 1 1/2" = 1'-0"

ASSEMBLE 4 BASES WITH WOODGLUE & DRYWALL SCREWS
 ATTACH LAUAN FACING WITH WOOD GLUE & NARROW CROWN STAPLES
 ROUTE HINGE INSETS TO FIT



EVERYBODY

PLAYWRIGHT: BRANDEN JACOBS-JENKINS
 DIRECTOR: KRISTIN NESHATI-JOHNSEN
 SCENIC DESIGNER: JONATHAN DAHM ROBERTSON
 PROPS DESIGNER: STEPHAN STARLING

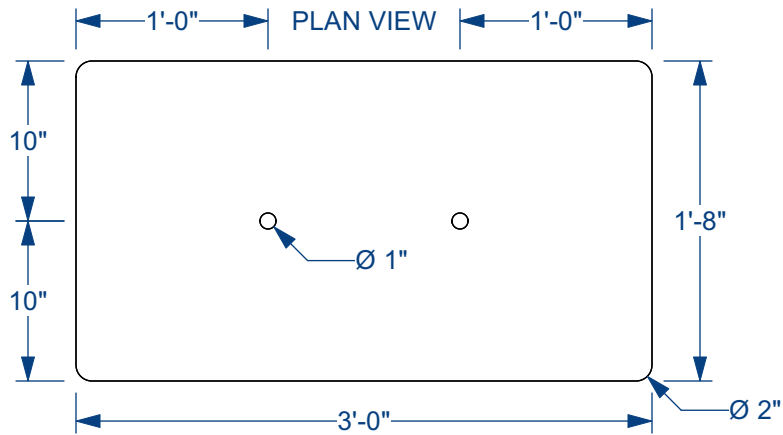
BASE ASSEMBLY

GMU SCHOOL OF THEATER
 DATE: 1/9/22
 REVISED: 1/9/22
 SCALE: AS NOTED

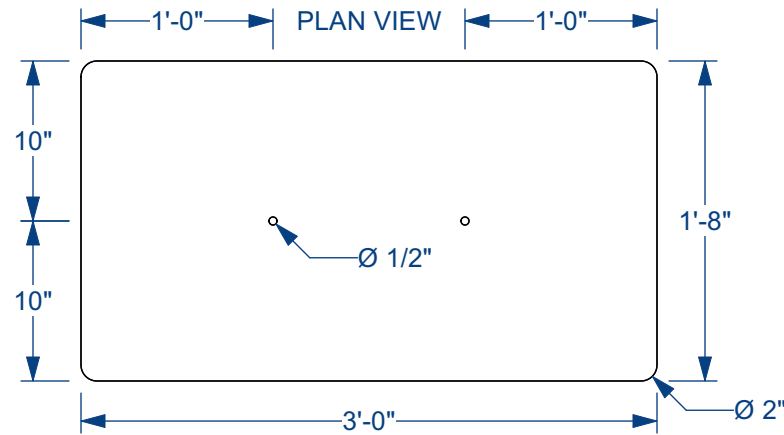
PLATE

3

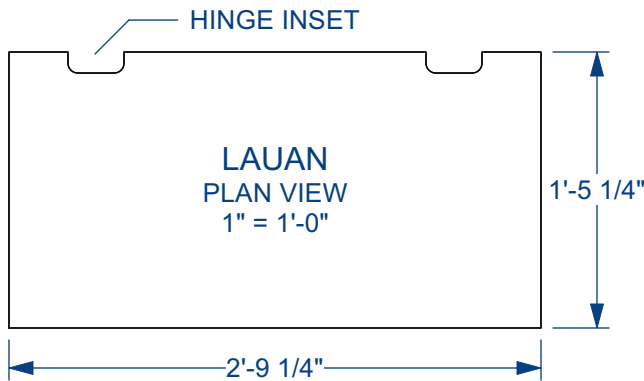
OF 4



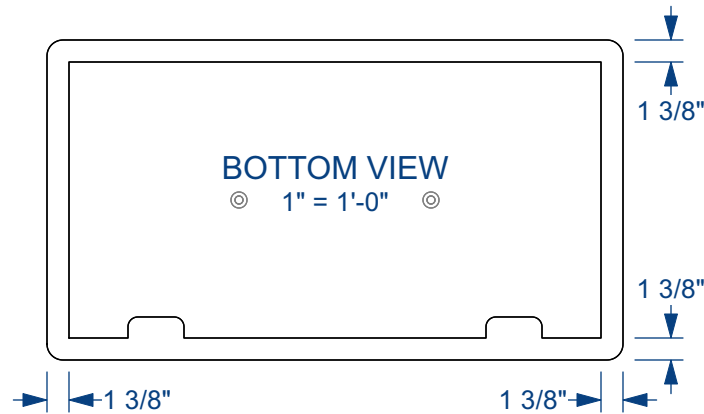
UPHOLSTERY FOAM
1" = 1'-0"



PLYWOOD
1" = 1'-0"



LAUAN
PLAN VIEW
1" = 1'-0"



BOTTOM VIEW
1" = 1'-0"



FRONT VIEW
1 1/2" = 1'-0"

PLATE

4

OF 4

TOP

EVERYBODY

PLAYWRIGHT:	BRANDEN JACOBS-JENKINS	GMU SCHOOL OF THEATER
DIRECTOR:	KRISTIN NESHATI-JOHSEN	DATE: 1/9/22
SCENIC DESIGNER:	JONATHAN DAHM ROBERTSON	REVISED: 1/9/22
PROPS DESIGNER:	STEPHAN STARLING	SCALE: AS NOTED

- BUILD 4
- CUT & DRILL BEFORE ASSEMBLY
- ADD 1/4" T-NUTS TO 3/4" PLYWOOD AS ATTACHMENT POINTS FOR HINGES
- SUPER 77 2" UPHOLSTERY FOAM TO PLYWOOD
- UPHOLSTER & TUFT USING 1/2" PNEUMATIC UPHOLSTERY STAPLES
- ATTACH LAUAN WITH NARROW CROWN STAPLES AFTER UPHOLSTERY & TUFTING

- CUT LIST**
- 3/4" PLYWOOD
4 @ 1'-8"x3'-0"
 - 2" FOAM
4 @ 1'-8"x3'-0"
 - LAUAN
4 @ 1'-5 1/4"
x 2'-9 1/4"